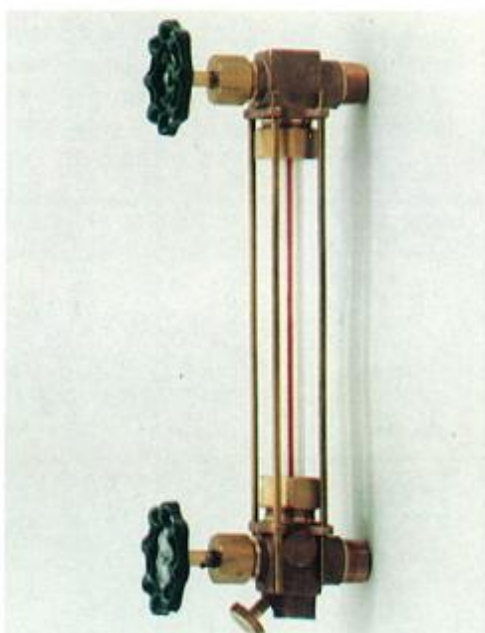


DURAN® TUBULAR GAGE GLASS — REDLINE



Redline Glass Code 7740. Duran borosilicate tubular gage glass has a red line between two white lines which, in the presence of a colorless liquid, magnifies the red line. The bold red line makes it easier to read the liquid level. Redline tubular gage glass is widely used in tanks, reservoirs and low pressure boiler applications.



Tubular Gage Valve

NOTE: Each piece of Duran tubular gage glass of standard length and in case quantities has the following identification imprinted on the glass:

1. Type of glass
2. Co-efficient of expansion
3. High Pressure Redline
4. Hour and minute of manufacture
5. Date of manufacture

Standard length tubular gage glass ends are either cut and slightly glazed or cut with a silicon carbide saw

IMPORTANT NOTE: Never exceed liquid level gage manufacturer or glass manufacturer's pressure or temperature rating, whichever is less.

- * Intermediate lengths are available upon request.
- ** Consult distributor for corrosion data.
- *** Maximum recommended length in service is 24".

MAXIMUM RECOMMENDED WORKING PRESSURE, psig

Size (Inches)	LENGTH* (Inches)	Temperatures Up to 150°F, ND Corrosion**	Steam Boiler Service Up to 425°F	
<u>1/2" O.D.</u>	8"	390	300	
	10"	370	295	
	12"	360	295	
	14"	345	290	
	+0, -1/32"	16"	335	285
	WALL	18"	325	280
	5/64"	20"	310	280
	±1/64"	24"	280	270
		30"	250	***
		36"	215	***
	(Max. Length)	48"	175	***
	60"	135	***	
	72"	100	***	
<u>5/8" O.D.</u>	8" †	370	285	
	10" †	345	280	
	12" †	335	280	
	14" †	325	275	
	+0, -1/32"	16" †	315	270
	WALL	18" †	305	265
	3/32"	20" †	290	265
	±1/64"	24" †	265	255
		30" †	235	***
		36" †	205	***
	(Max. Length)	48" †	165	***
	60" †	125	***	
	72" †	90	***	
<u>3/4" O.D.</u>	8"	360	280	
	10"	240	275	
	12"	330	275	
	14"	320	270	
	+0, -1/32"	16"	310	265
	WALL	18"	330	260
	7/64"	20"	285	260
	±1/64"	24"	260	250
		30"	230	***
		36"	200	***
	(Max. Length)	48"	160	***
	60"	125	***	
	72"	90	***	
† STANDARD STOCK FACTORY LENGTH — 12 PCS. PER CASE				
<u>7/8" O.D.</u>	8"	315	This Size NOT Recommended In This Service	
	10"	310		
	12"	305		
	14"	300		
	+0, -1/32"	16"		285
	WALL	18"		280
	1/8"	20"		275
	±1/32"	24"		265
		30"		240
		36"		225
	(Max. Length)	48"		185
	60"	145		
	72"	100		
<u>1" O.D.</u>	8"	275	This Size NOT Recommended In This Service	
	10"	270		
	12"	265		
	14"	260		
	+0, -1/32"	16"		250
	WALL	18"		245
	1/8"	20"		240
	±1/32"	24"		230
		30"		210
		36"		195
	(Max. Length)	48"		160
	60"	125		
	72"	90		

DURAN® is a registered trademark of Schott Glaswerke Mainz, Germany.